



CSE 1530

**Introduction to Computer Use II:
Programming**

Winter 2006 (Section M)

Topic F: External Files and Databases -
Using Classes and Objects

Friday, March 24 2006

Bill Kapralos

CSE 1530, Winter 2006, Bill Kapralos

Overview (1):

- **Before We Begin**
 - Some administrative details
 - Some questions to consider
- **Opening and Reading a File (cont.)**
 - Common dialog properties
- **Exercise 6-8**
 - Overview
 - Questions ?

Before We Begin

Administrative Details (1):

- **Exercise 6-8**
 - Due Monday, March 27 2006 before noon
 - I will be in the Glade Lab today after the lecture
- **Test Annulment Forms**
 - Will be available from **March 27 - April 21** 2006 from the Computer Science Engineering Undergrad Office located in CSEB 1003
 - Office hours → 10:00am - 12:00pm & 2:00-4:30pm
 - Must be completed if you wish to drop either of your test grades (Test 1 and/or Test 2)

Some Questions to Consider (1):

- What is the *MComDlg* ?
- What is the object browser and how can we use it to view the "contents" of *MComDlg* ?
- How can we access the *ShowOpen* method ?
- What is the *FileName* property ?
- What is the *Filter* property ?

Opening and Reading a File (cont.)

Recall - Opening a File (1):

• ShowOpen Method (cont.)

- You can easily verify that the name has been properly assigned to the FileName property
 - Add a Label (called for example, lblFileName) to the Form and then add the following statement

```
lblFileName.Caption = cdlTest.FileName
```
 - The name of the file should appear in the Label
- The FileName property is actually one of the most important properties since we will need the name of the file to open any specified file!

Recall - Opening a File (2):

• Some Other Common Dialog Properties

- Filter property
- InitDir property
- Cancel error property
- Flags property
- Lets take a closer look at these now...

Common Dialog Properties (1):

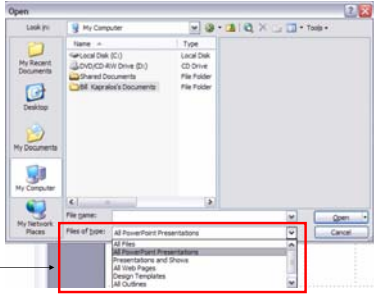
• The Filter Property

- Determines which type of files are displayed (e.g., files of a particular extension) in the open file window by specifying a list of file types along with a brief description that will actually appear in the file open window
- String argument that is composed of a set of **description** and **file extension** specifications separated by the **pipe** symbol (the vertical bar "|")
 - Included before the ShowOpen statement and it is called within the _Click event handler

Common Dialog Properties (2):

• The File Property (cont.)

- Graphical illustration → Powerpoint Open File



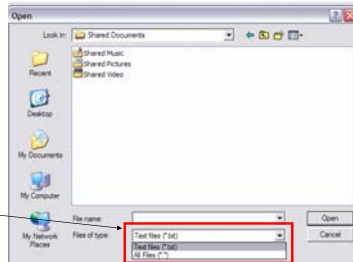
File types along with a brief description

Common Dialog Properties (3):

• The Filter Property (cont.)

- Example

```
cdlTest.Filter = "Text files (*.txt) | *.txt | All Files (*.*) | *.*"
```



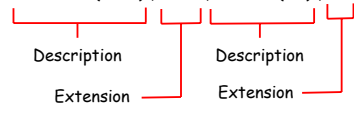
File types determined by the Filter property

Common Dialog Properties (4):

• The Filter Property (cont.)

- Example

```
cdlTest.Filter = "Text files (*.txt) | *.txt | All Files (*.*) | *.*"
```



- The "*" Operator → the "all" operator
 - Denotes "anything" → could be any sequence of characters denoting a file name
 - *.txt → denotes any file that ends with the .txt extension and *.* → any file with any extension

Common Dialog Properties (5):

- **The InitDir Property**
 - String that determines which directory (folder) is displayed when the open file dialog window appears
 - Can be set at design time
 - Must represent a valid directory path otherwise
 - Will default to whatever directory was last used in the open file dialog window
 - Example
 - `cdlTest.InitDir = "C:\My Documents\VB labs\Ch7"`

Common Dialog Properties (6):

- **The CancelError Property**
 - Included in the file dialog window is the "Cancel" button
 - Rather than selecting a file, the user may click "Cancel"
 - It is standard practice to treat this situation as an error
 - Such errors can be handled by sending out an "error" event and then calling an appropriate error handler to handle the error
 - **Error handling is actually an important concept!**

Common Dialog Properties (7):

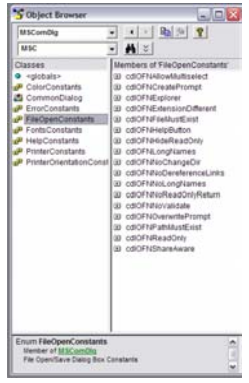
- **The Flags Property**
 - Used to specify how to handle various other situations that may arise with the common dialog box
 - Rather than actually choosing a file, the user may type a file name in the textbox that does not exist on the computer/directory (e.g., represents a new file) → The Flags property tells us how to handle such situations
 - In the scenario described above, since we only want to open a file for reading, we shouldn't allow the user to specify a file that doesn't exist

Common Dialog Properties (8):

- **The Flags Property (cont.)**
 - Many flag properties are available for you to choose
 - Viewing the available Flags
 - Open the Object Browser (from the View menu)
 - Select the **MSComDlg** library
 - Select the **FileOpenConstants**
 - Setting the Flags
 - We want the **cdIOFNFileMustExist**
 - `cdlTest.Flags = cdIOFNFileMustExist` before the `ShowOpen` statement in the `_Click` event handler

Common Dialog Properties (9):

- **The Flags Property (cont.)**
 - Graphical illustration of the `FileOpenConstants`



Exercise 6-8
